

RADWIN 2000 C-Series



RW-2030-0100

RW-2030-0100

RW-2030-0100 is a carrier-class radio that supports 3.3 to 3.8 GHz bands and fully complies with FCC, IC and Universal regulations. This radio is part of the RADWIN 2000 C-Series that delivers high capacity and extended range for Corporate Access and Backhaul needs.

Packing native TDM and Ethernet over a single wireless link, the RADWIN 2000 C-Series provides 100 Mbps net throughput (up to 16E1/T1 plus Ethernet) at a range of up to 120 km/75 miles.

RADWIN RW-2030-0100 comes with an integrated antenna.

Product Highlights

- 100 Mbps Ethernet net throughput and up to 16E1s/T1s
- Native TDM transport
- Long range – up to 120 km/75 miles
- Adaptive asymmetric throughput – dynamic allocation between uplink and downlink
- Single radio supporting multiple bands (3.3 to 3.8 GHz)
- Advanced MIMO, OFDM and Diversity technologies
- Robust and reliable to operate in tough conditions, extreme temperatures and non line-of-sight scenarios

Product Specifications

Configuration	
Architecture	Outdoor Unit with Integrated Antenna
IDU to ODU Interface	Outdoor CAT-5e cable; Maximum cable length: 100 m
Radio	
Capacity	100 Mbps net throughput (up to 16E1s/T1s plus Ethernet)
Range	Up to 120 km / 75 miles
Channel Bandwidth	5, 10, 20 MHz
Modem Operations	Single chain 2X2 Diversity 2X2 MIMO
Modulation	2x2 MIMO-OFDM (BPSK/QPSK/16QAM/64QAM)
Adaptive Modulation & Coding	Supported
Automatic Channel Selection	Supported
Diversity	Supported
Spectrum View	Supported
Asymmetric TDD	Supported
Max Tx Power	25 dBm
TPC Range	17 dBm (8-25dbm) Minimum TX power step of 1db
Channel minimum step	1 MHz under 3.650-3.675 FCC/IC Band – Restricted Mode 250 KHz under 3.475-3.650 IC Band and 3.300-3.800 Universal
Duplex Technology	TDD
Error Correction	FEC k = 1/2, 2/3, 3/4, 5/6
Encryption	AES 128
QoS	Packet classification to 4 queues according to 802.1p and Diffserv, Dynamic scheduling according to air interface changes
VLAN	Supported
Supported Indoor Units	IDU-C Series (RW-72XX-2000) and IDU-E Series (RW-71XX-2000)
Hub Site Synchronization (HSS)	Up to 16 collocated links
Monitored Hot Standby (MHS)	1+1 with RADWIN 2000 link or WinLink 1000 link

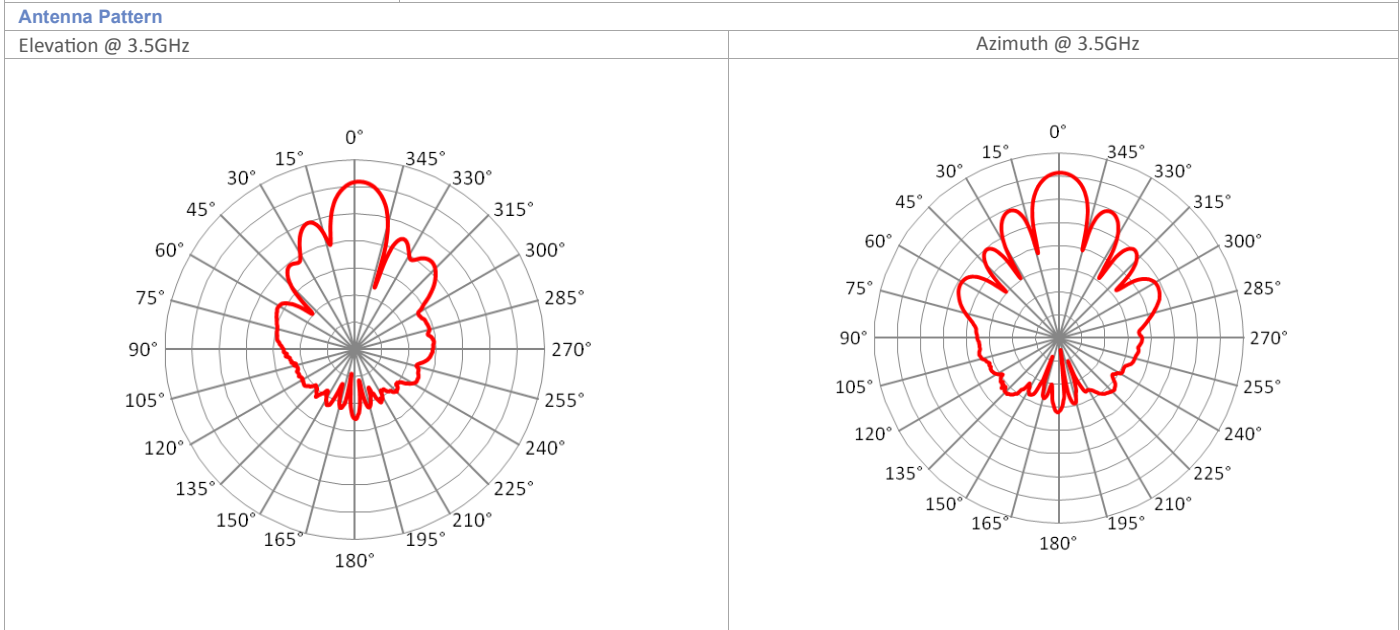
Supported Bands

Band	Occupied Frequency Range	Radio Compliance
3.6 GHz FCC*	3.650 - 3.675 GHz*	FCC 47CFR, Part 90 – Restricted Mode
3.5 GHz IC	3.475 - 3.650 GHz	IC RSS 192, issue-3
3.x GHz Universal	3.400 - 3.700 GHz	
3.x GHz Universal	3.300 - 3.800 GHz	

* Factory Default

Mechanical	
Dimensions	37.1(w) x 37.1(h) x 11.0(d) cm
Weight	3.5 kg / 7 lbs
Power	
Power Feeding	Power provided over ODU-IDU cable
Power Consumption	<35W (IDU + ODU)
Environmental	
Operating Temperatures	-35°C - 60°C / -31°F – 140°F
Humidity	100% condensing, IP67 (totally protected against dust and against immersion up to 1m)
Safety	
FCC/IC (cTUVus)	UL 60950-1, UL 60950-22, CAN/CSA C22.2 60950-1, CAN/CSA C22.2 60950-22
ETSI	EN/IEC 60950-1, EN/IEC 60950-22
EMC	
FCC	CFR47 Class B, Part15, Subpart B
ETSI	EN 300 386, EN 301 489-1, EN 301 489-4
CAN/CSA-CEI/IEC	CISPR 22-04 Class B
AS/NZS	CISPR 22-2004 Class B

Integrated Antenna		3.30 – 3.80 GHz	
Frequency Range	3.30 – 3.80 GHz		
Gain	port V port H	21.0 dBi ± 1.0dB 20.0 dBi ± 0.5dB	
VSWR	port V port H	1.5 :1 (typ) 1.5:1 (max) 1.5 :1 (typ) 1.5:1 (max)	
3 dB Beam width	12° (typ)		
Elevation 3 dB Beamwidth	15° (typ)		
AZ & EL Beam Squint	± 2° Port V & Port H		
Polarization	Dual Linear (Vertical and Horizontal)		
Sidelobes Level	ETSI EN 302 085 V1.1.2, TS1-TS3		
Cross Polarization	ETSI EN 302 085 V1.1.2, TS1-TS3 25dB(max)		
F/B Ratio	20 dB (max)		
Port To Port Isolation	35 dB (min)		
Lightning Protection	DC grounded		



Ordering Information

Part Number: RW-2030-0100

Description:
RADWIN 2000 C-Series ODU with integrated antenna, supporting 3.3 to 3.8GHz

Corporate Headquarters, T. +972.3.766.2900, E. sales@radwin.com, www.radwin.com

The RADWIN name is a registered trademark of RADWIN Ltd.
© All rights reserved, May 2011

DS RW-2030-0100/05.11