

RADWIN 5000 – HPMP

RW-5510-0350 Subscriber Unit – Data Sheet



HSU 510 SERIES

Subscriber Units - RW-5510-0350

RADWIN RW-5510-0350 Subscriber Unit (HSU) provides high capacity access connectivity of up to 10Mbps net aggregate throughput.

RW-5510-0350 works with HBS-5200 base station.

RW-5510-0350 supports from 4.9 to 6 GHz and complies with FCC, IC (Canada) WPC (India), MII (China) and universal regulations.

Product Highlights

- Up to 10 Mbps net aggregate throughput
- Guaranteed Service level Agreement (SLA) per HSU
- Outstanding short and constant latency
- Long range – up to 40 km/25 miles
- Advanced MIMO, OFDM and Diversity technologies
- Excellent operation in nLOS and NLOS scenarios
- Ease of operation and maintenance

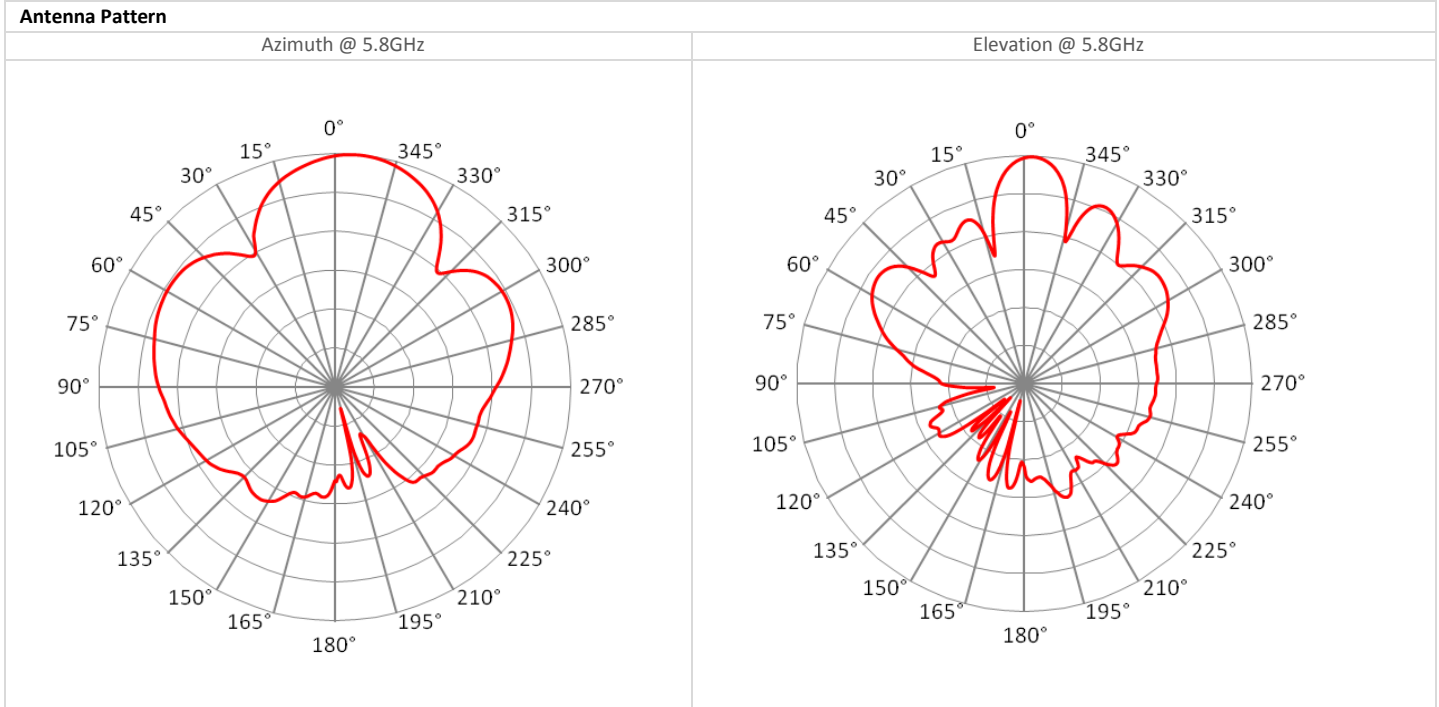
RW-5510-0350 - Product Specifications

CONFIGURATION	
Architecture	Outdoor Unit Connectorized for External Antenna with small form factor antenna
PoE to ODU Interface	Outdoor CAT-5e cable; Maximum cable length: 100 m
RADIO	
Capacity net aggregate throughput	10 Mbps
Range	Up to 40 km / 25 miles
Channel Bandwidth	Configurable: 5,10, 20 and 40 MHz
Modulation	2x2 MIMO-OFDM (BPSK/QPSK/16QAM/64QAM)
Bandwidth allocation	Symmetric and Asymmetric
Adaptive Modulation & Coding	Supported
DFS	Supported
Diversity	Supported
Spectrum Viewer	Supported
Max Tx Power	25 dBm (*)
Duplex Technology	TDD
Error Correction	FEC k = 1/2, 2/3, 3/4, 5/6
Encryption	AES 128
Supported Indoor Units	RADWIN PoE device (RW-9921-001X)
Ethernet Interface	10/100 BaseT
Layer 2	Hub Mode
QoS	Supported Packet classification to 4 queues according to 802.1p and Diffserv
VLAN	Supported 802.1Q, 8021.P, QinQ

Note (*) - Subject to regulation in each country and specific product

SUPPORTED BANDS RW-5510-0350		
5.8 GHz FCC/IC*	5.725 - 5.850 GHz	FCC 47CFR, Part 15, Subpart C and IC RSS-210
5.8 GHz MII	5.730 - 5.845 GHz	MI I for 5.8 GHz
5.8 GHz WPC India	5.825 - 5.875 GHz	WPC GSR-38
5.4 GHz FCC	5.480 - 5.715 GHz	FCC 47CFR, Part 15, Subpart E
5.4 GHz IC	5.480 - 5.715 GHz	IC RSS-210
5.3 GHz FCC/IC	5.255 - 5.350 GHz	FCC 47CFR, Part 15, Subpart E and IC RSS-210
4.9 GHz FCC/IC	4.940 - 4.990 GHz	FCC 47CFR, Part 90, Subpart Y and IC RSS-111
6.0 GHz Universal	5.690 - 6.060 GHz	Universal
5.9 GHz Universal	5.730 - 5.960 GHz	Universal
5.4 GHz Universal	5.465 - 5.730 GHz	Universal
5.3 GHz Universal	5.140 - 5.345 GHz	Universal
5.0 GHz Universal	4.990 - 5.160 GHz	Universal
4.9 GHz Universal	4.890 - 5.010 GHz	Universal
*Default Band		
MECHANICAL		
ODU Dimensions	19.5(w) x 27.0(h) x 9.0(d) cm	
ODU Weight	1.8 kg / 3.6 lbs	
POWER		
Power Feeding	Power provided over ODU-IDU cable using PoE	
Power Consumption	<20W	
ENVIRONMENTAL		
Operating Temperatures	-35°C to 60°C / -31°F to 140°F	
Humidity	100% condensing, IP67 (totally protected against dust and against immersion up to 1m)	
SAFETY		
FCC/IC (cTUVus)	UL 60950-1, UL 60950-22, CAN/CSA C22.2 60950-1, CAN/CSA C22.2 60950-22	
ETSI	EN/IEC 60950-1, EN/IEC 60950-22	
EMC		
FCC	47 CFR Class B, Part15, Subpart B	
ETSI	EN 300 386, EN 301 489-1, EN 301 489-4	
CAN/CSA-CEI/IEC	CISPR 22-04 Class B	
AS/NZS	CISPR 22-2004 Class B	

Integrated Antenna	
Gain	13.0 ± 1.0 dBi @ 4.9-5.15 GHz 15.0 ± 1.0 dBi @ 5.15-5.47 GHz 15.5 ± 1.0 dBi @ 5.47-5.875 GHz 12.5 ± 1.0 dBi @ 5.875-6.02 GHz 11.5 ± 1.0 dBi @ 6.02-6.06 GHz
VSWR	1.5 : 1 (typ) 2 : 1(max)
Azimuth 3 dB Beamwidth	35° (typ)
Elevation 3 dB Beamwidth	15° (typ)
AZ & EL Beam Squint	± 2.5° Port V & Port H
Polarization	Dual Linear (Vertical and Horizontal)
Sidelobes Level	ETSI EN 302 085 V1.1.2, TS1-TS3
Cross Polarization	ETSI EN 302 085 V1.1.2, TS1-TS3
F/B Ratio	-20 dB (max)
Port To Port Isolation	40 dB (min)
Lightning Protection	DC grounded



Ordering Info

Part Number: RW-5510-0350

Description: RADWIN HSU 510 Series Subscriber Unit Radio with small-form-factor integrated antenna and Connectorized for external antenna (2xN-type), supporting multi frequency bands at 5.x GHz, factory default 5.8 GHz FCC/IC

Corporate Headquarters, T. +972.3.766.2900, E. sales@radwin.com, www.radwin.com

The RADWIN name is a registered trademark of RADWIN Ltd.

© All rights reserved, August 2011 DS RW-5510-0350/08.11, Software Release 3.2

RADWIN